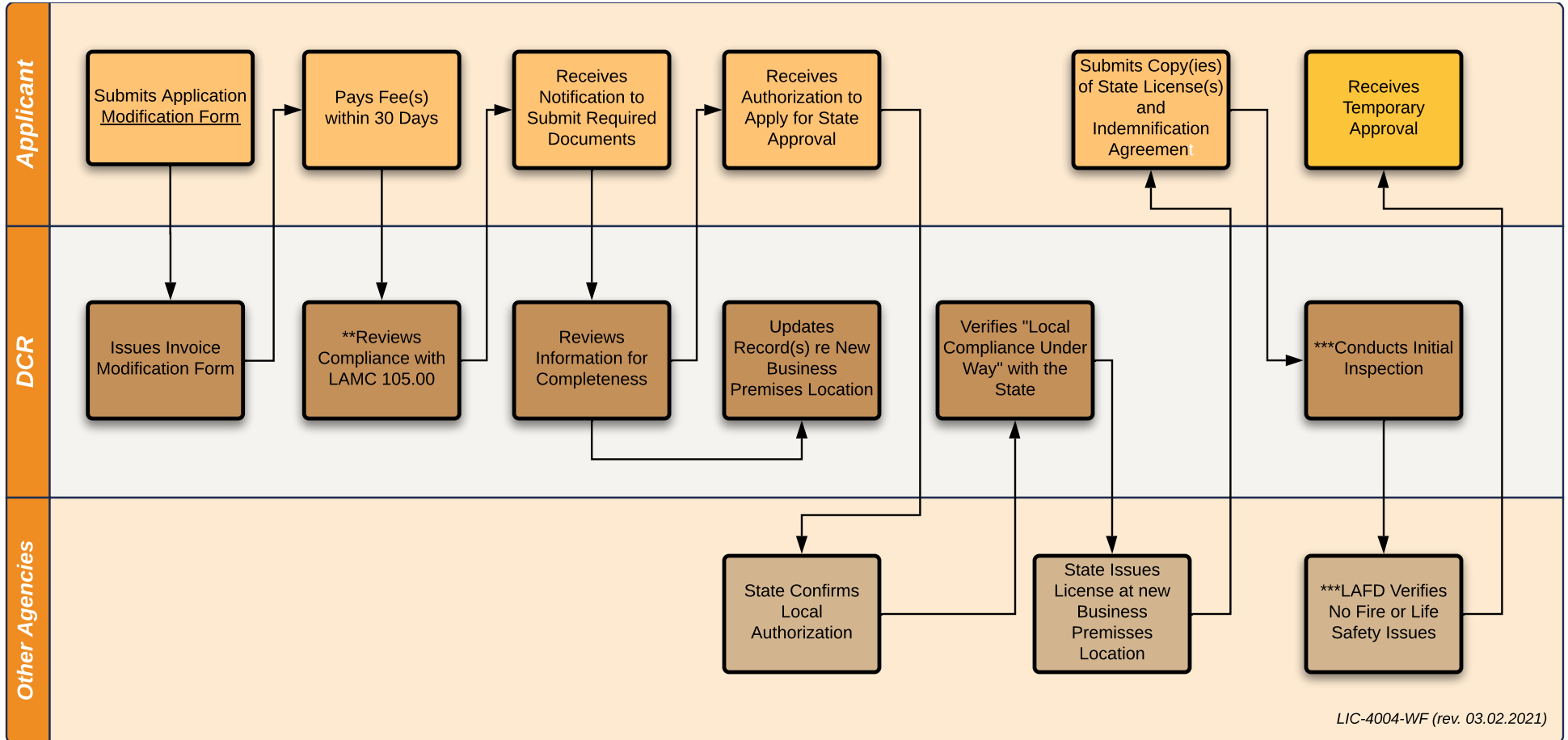




# APPLICATION MODIFICATION WORKFLOW BUSINESS PREMISES RELOCATION



LIC-4004-WF (rev. 03.02.2021)

**Notes:**

\* This process does not apply to Applicants who have been issued an Annual License.

\*\*If the location of the Business Premises does not comply LAMC Sec. 105, the modification will be denied.

\*\*\*This workflow assumes that the Applicant passes the DCR's Initial Inspection and the LAFD Inspection. If corrections are issued upon either inspection, an additional inspection trip fee will be due prior to any future inspection(s). Submittal of the State License(s) to DCR and the inspections conducted by DCR and LAFD may be completed in any order, after the Department reviews documents for completeness.

This document is intended to serve as an informational guide only. It does not replace or supersede the Los Angeles Municipal Code and does not constitute legal advice. This document is subject to change and may not constitute the most up-to-date or complete information. Applicants are encouraged to conduct their own due diligence and research to ensure that they are in compliance with all legal requirements.